

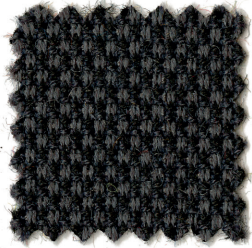
1969

 **LUXY.**

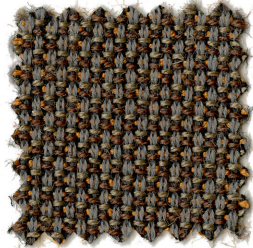
CATEGORIA K/  
CATEGORY K

TESSUTO/  
UPHOLSTERY

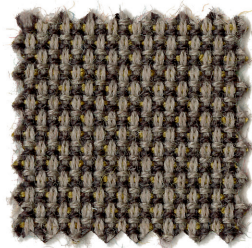
BREEZE FUSION  
Gabriel®



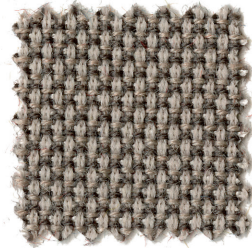
1979



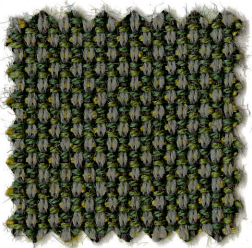
1966



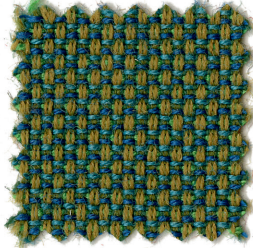
1977



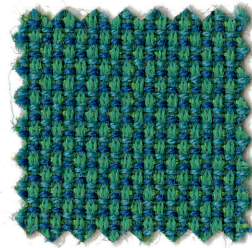
1976



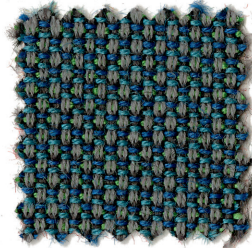
1970



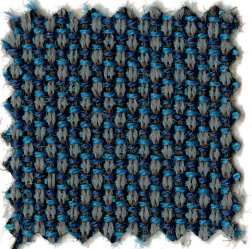
1968



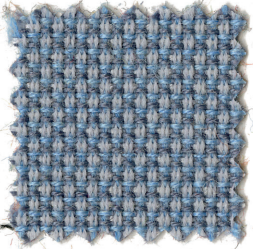
1997



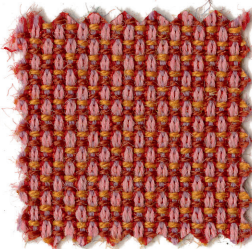
1973



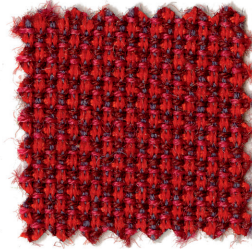
1974



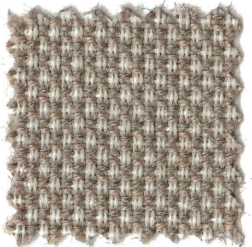
1994



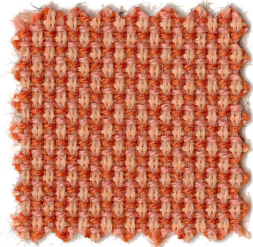
1962



1959



1952



1957





#### DESTINAZIONI D'USO/ APPLICATIONS

Rivestimenti per imbottiti, casa, ufficio  
e contract/ Offices, contract use

#### RESISTENZA ALL'ABRASIONE (CICLI MARTINDALE)/ ABRASION RESISTANCE (MARTINDALE CYCLES)

EN ISO 12497-2	100.000
ASTM D4966-02	100.000

#### RESISTENZA ALLO SFREGAMENTO/ FASTNESS TO RUBBING (EN ISO 105 - X12)

Umido/ Wet	4/5
Secco/ Dry	4/5

#### RESISTENZA ALLA LUCE/ LIGHT FASTNESS (EN ISO 105 - B02)

5/7

PILLING (EN ISO 12945-2) 4/5

#### MANUTENZIONE E PULIZIA/ MAINTENANCE AND CLEANING

Lavaggio a secco P(S)/ Dry cleaning P(S)

#### BREEZE FUSION

#### CARATTERISTICHE/ DESCRIPTION

88% lana Nuova Zelanda  
12% poliammide  
Altezza 140 cm  
Peso 421 g/m<sup>2</sup>  
Possono verificarsi differenze di colore

88% New Zealand wool  
12% polyamide  
Width 140 cm  
Weight 421 g/m<sup>2</sup>  
Differences in color may occur

#### INFIAMMABILITÀ/ FLAMMABILITY

EN 1021-1  
EN 1021-2  
BS 5852 Part 1  
BS 5852 CRIB 5  
TB 117- 2013  
IIM UNI 9175

Le performance ritardanti di fiamma dipendono dalla schiuma utilizzata. Non contiene sostanze chimiche ritardanti di fiamma/ Will also pass other flammability standards. Flame retardant performance is dependent upon the foam used. Contains no flame retardant chemicals

10 ANNI DI GARANZIA/ 10 YEAR WARRANTY

REVISIONE TESSUTI 05-2021/  
FABRIC REVIEW 2021-05

